

Gladys Mgudlandlu

Ostriches (1962)

Gouache on paper glued to card (39,5 x 50cm)

SANG Acc 91/127

TECHNICAL REPORT

This painting by Gladys Mgudlandlu was painted about five years after she had begun painting seriously, and one year after her first solo exhibition.



Gladys Mgudlandlu *Ostriches* (1962) Gouache on paper laid on card.

Support

The paper support is glued to a thicker piece of cardboard. Whether this was done by the artist or later is not evident.

Underdrawing

The painting has been planned with extensive pencil underdrawing which remains evident through the lighter passages, such as in the mountains. Here it is also possible to see that the artist has noted down which colours to use in which areas, for example 'Rust' in the middle distance hills of the mountains or 'Brown' in the back mountains. This suggests a certain attention to detail which might

otherwise not be expected due to the extremely expressive nature of the painting. It also suggests that the drawing was done away from her paints, possibly at another location, perhaps even on site.



Detail of the mountains with visible underdrawing and colour notation



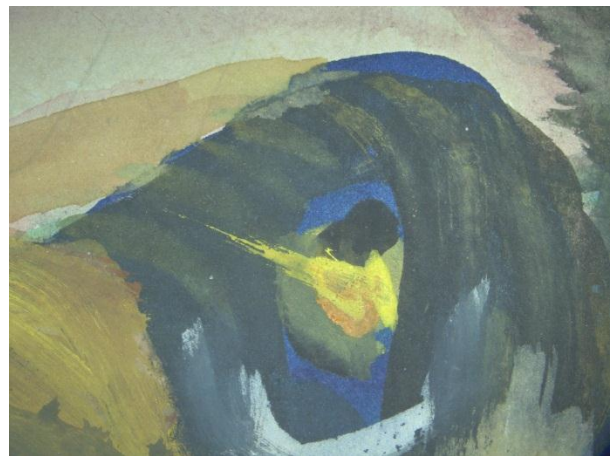
Detail in infrared showing the underdrawing and colour notation more clearly

Paint Layers

The paint layers of the foreground are built up over a blue underpainting which can be seen through reserves in the upper layers. This is most evident in the field and along the fence, but also below the ostriches.



Detail showing the blue underpainting below the fence



Detail of the foreground ostrich's head showing blue underpainting

The paint layers have been applied both diluted in transparent washes, as in a watercolour technique, evident in the mountains, as well as more thickly and opaquely to create the details of the foliage and birds, including highlights and even slightly impasted brushstrokes. This serves to create a rich and varied texture to the work.



Detail showing impasto in clouds



Detail showing impasto in green of field

Photography to do:

Details in IR of writing in mountains

Other Questions:

Working method??? Did she sketch outdoors then paint over the sketch later???

Medium. Was it gouache / poster paint ?